

# Information Meeting Start-up Labs @ VBC

April 3<sup>rd</sup>, 2019

Introducing BI Innovation Prize

Guido Boehmelt, PhD



# Boehringer Ingelheim in Brief



- **Family-owned global corporation** dedicated to *Value through Innovation* since 1885
- **Focus on Human Pharmaceuticals**, Animal Health and Biopharmaceutical Contract Manufacturing
- Around **50,000 employees** worldwide
  - ~8000 staff in research, development and medicine
- **Four major Human Pharma R&D sites** worldwide
  - Germany, USA, Austria, Japan
- 2017: **18.1 billion EUR net sales**
  - Thereof 12.6 billion EUR in Human Pharma
- **Strong commitment** to R&D investment
  - **Investment of at least 20%** of human pharma net sales for research, development and medicine

# Working Together for Better Health

External innovation at each stage of the value chain is a key component of our R&D strategy



- Partnering plays a **strategic role** in our drug discovery and development efforts
- We **invest** with a **long-term commitment** into the life-science innovation community

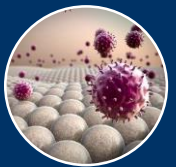
# Partnering Areas of Focus



**CardioMetabolic Diseases**



**Central Nervous System Diseases**



**Immunology**



**Oncology & Cancer Immunology**



**Respiratory Diseases**



**Technologies**

## CardioMetabolic Disease

Treating the consequences of the Metabolic Syndrome with programs for NASH/Fibrotic Liver Diseases (all stages), Retinopathies, Obesity and disruptive approaches to Diabetes (Discovery - early clinical).

## Central Nervous System

Innovative approaches to modulate maladaptive neurocircuits or neuronal network activity for treating symptom domains within neuropsychiatric diseases such as schizophrenia, depression, impulsivity disorders or Alzheimer's disease (e.g., cognition, anhedonia).

## Immunology

Autoimmune and inflammatory diseases affecting the gut and skin with a particular focus on Crohn's disease, ulcerative colitis and systemic sclerosis/scleroderma

## Oncology & Cancer Immunology

FiC solid tumor concepts directly targeting aberrant cancer signaling and mutational drivers, and indirectly those that harness the immune response, with a focus on myeloid stimulation.

## Respiratory

Opportunities to block pro-fibrotic signaling beyond standard of care, approaches to induce lung repair.

## Technologies

Translate the most promising technology innovations to support our Research, Development and Translational Medicine with impactful applications, technology platforms and enabling technologies.

<https://www.boehringer-ingenelheim.com/partnering/working-together/partnering-interests>

# Integrated Approach to External Innovation



## EXTERNAL INNOVATION



Supporting therapeutic areas (TAs) to access external innovation

Opening new opportunities beyond TA scope together with external scientists

Enter new fields via equity investments in Biotechs



## Looking beyond our **core therapeutic areas...**

- To explore new and disruptive ideas across the traditional research spectrum

## Looking beyond **our own expertise...**

- To build collaborations that blend external innovation with internal capabilities (> 80% of projects with external partners)

## Looking beyond **our geographical borders...**

- To connect with innovators and build partnerships in key life-science hotspots around the world

## Looking beyond **convention...**

- To pioneer unique models of industry-academic partnerships that facilitate deeper collaboration

# RBB: Areas of Focus and Activity at a Glance



## Indication Expansion

Growing the therapeutic impact of compounds in the BI development pipeline based on mechanistic concepts



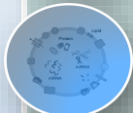
## Gene Therapy (vGT)

GOAL: achieve scientific leadership  
New therapeutic concepts and technology enhancements



## Regenerative Medicine

New targets/approaches for the mobilisation and/or differentiation of endogenous stem cells/progenitor cells



## New Technologies/Modalities:

Capture emerging technologies/modalities that will change medical practice e.g. exosomes



## Microbiome in cancer

Identification of novel bacteria and bacterial products, establishing their causal role in human health and disease



## Immunoinfection

Strategy development and Hub implementation



## Beyond Focus

Identify mid-phase projects with a “wow-factor”

# 'Grass Roots' Innovation at Boehringer Ingelheim: Office Hours

4<sup>th</sup> Vienna BI Office Hours

May 28<sup>th</sup>, 2019

9:00am – 5:00pm @ Vienna BioCenter!



- Personalized mentoring program that supports the next generation of biotech start-ups and entrepreneurs
- Provides access to expertise, a big pharma industry perspective and feedback to emerging life-science businesses
- More than 180 companies have participated since 2015
- Available in Boston, New York City and San Diego in the USA; London, UK and Vienna, Austria

## Access to Expertise:

- Research and pre-clinical development
- Medicine (clinical development)
- Biology and chemistry
- Pipeline management and marketing
- Business development



# 'Grass Roots' Innovation at Boehringer Ingelheim: Innovation Prize

BI Innovation Prize - Austria:  
Available following the opening of new  
Start-Up Labs Incubator @ Vienna  
BioCenter!



## BI Innovation Prize – Austria:

- pays lab and office rent (10.000-50.000€/year)
- will be awarded to innovative life science companies in the new **Start-Up Labs @ Vienna BioCenter**
- is valid for 12 months starting from month granted
- has no strings attached and provides access to BI experts' advice for startup company scientists, if desired

## Process:

- Company with granted access to Start-up Labs approaches BI with non-confidential summary of business plan / pitch slide deck (2 pager, 5-10 slides)
- Requests can be submitted any time
- Evaluation by BI expert team
- Announcement of awardee(s) in 3 month cycles



Join us in...



Working **together** for **better** health!